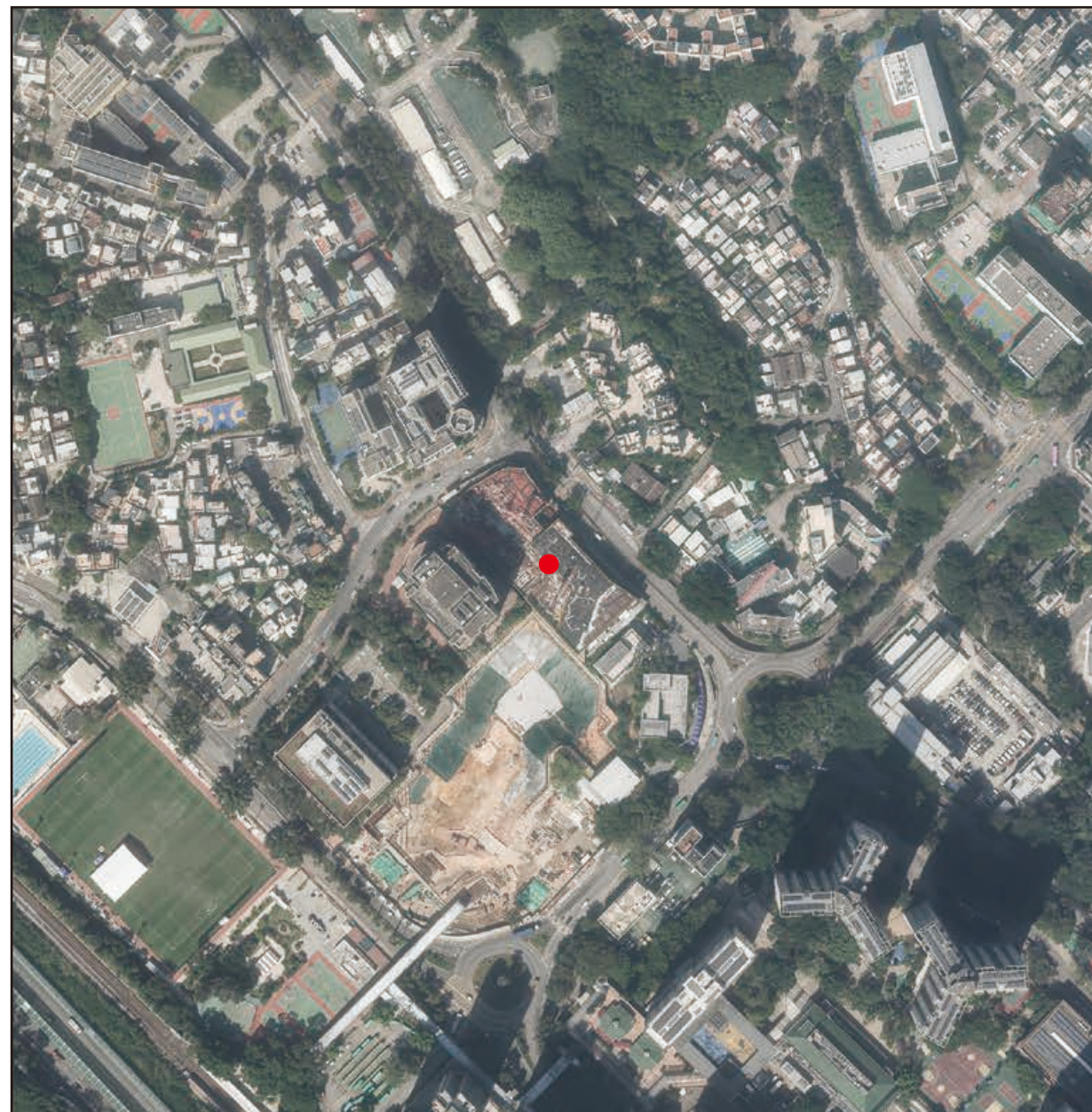


# 07 AERIAL PHOTOGRAPH OF THE DEVELOPMENT 發展項目的鳥瞰照片



● Location of the Development  
● 發展項目的位置

Adopted from part of the aerial photograph taken by the Survey and Mapping Office of the Lands Department at a flying height of 6,900 feet, photo no. E239039C, dated 1 November 2024.

摘錄自地政總署測繪處於2024年11月1日在6,900呎飛行高度拍攝之鳥瞰照片，照片編號為E239039C。

Survey and Mapping Office, Lands Department, The Government of HKSAR © Copyright reserved – reproduction by permission only.

香港特別行政區政府地政總署測繪處 © 版權所有，未經許可，不得翻印。

Notes:

1. The aerial photograph may show more than the area required under the Residential Properties (First-hand Sales) Ordinance due to the technical reason that the boundary of the Development is irregular.
2. The Aerial Photo is provided by the CSDI Portal and intellectual property rights are owned by the Government of the HKSAR.

備註：

1. 由於發展項目的邊界不規則的技術原因，此鳥瞰照片可能顯示多於《一手住宅物業銷售條例》所要求顯示出的範圍。
2. 航空照片由空間數據共享平台提供，香港特別行政區政府為知識產權擁有人。